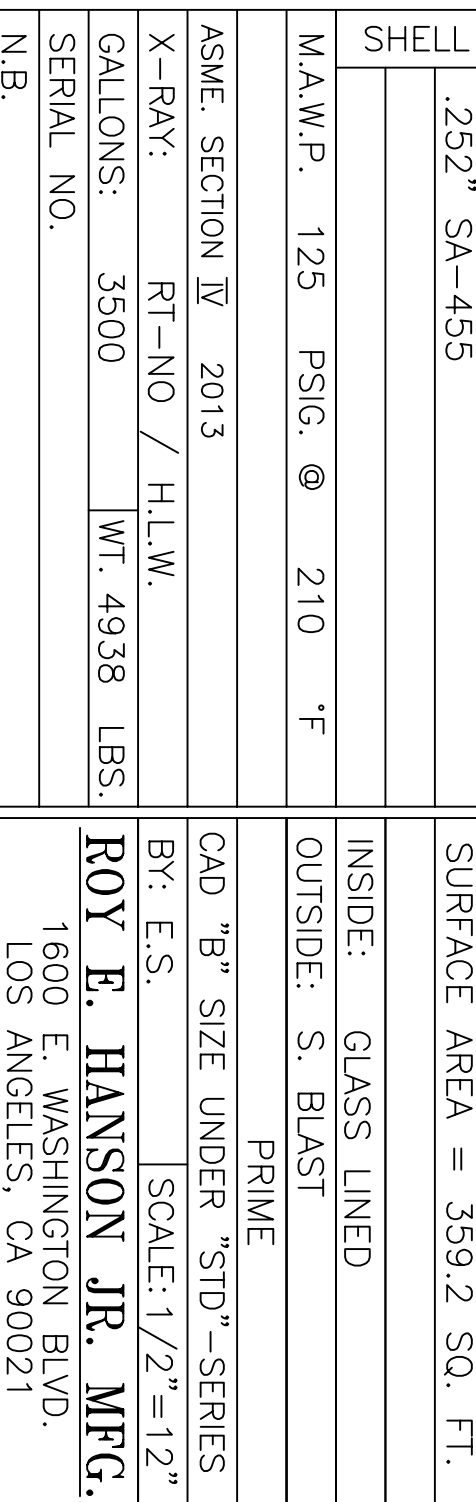
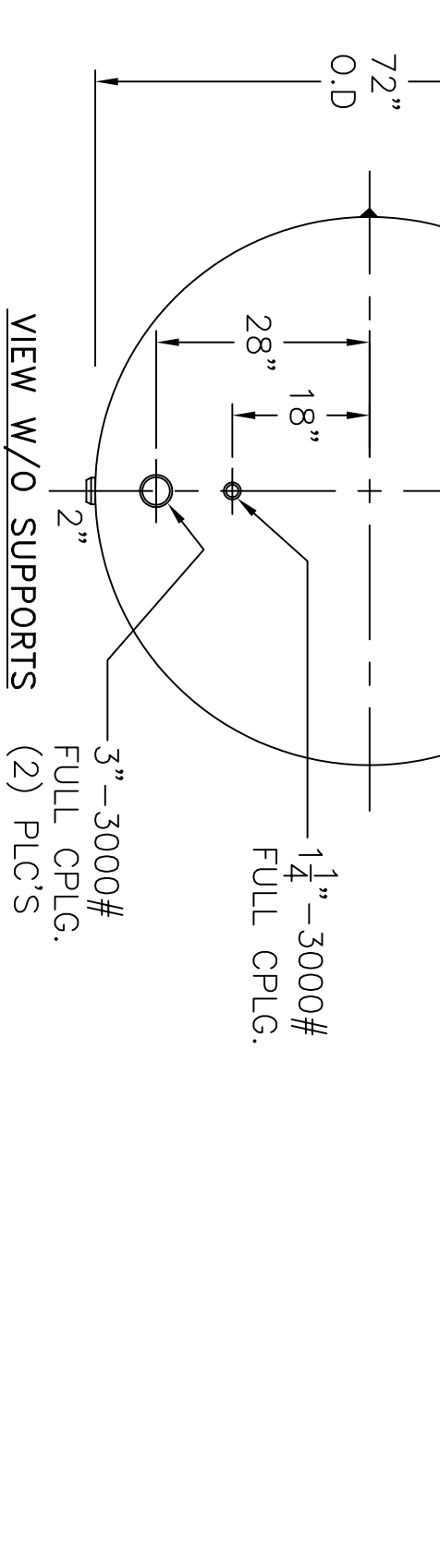


NOTE. 1) HYDRO @ 188 PSIG. MIN. TO 197 PSIG. MAX.
 2) SHIP LOOSE W/ (5) 1 5/16" x 72" LG. FLEX. MAG. ANODES.
 3) SHELL & LEFT HEAD - 8/26/04 PROOF TEST.

HEADS		SHELL	
LEFT	.250" SA-455 2:1 S.E. (.210" MIN.)	RIGHT	.289" SA-455 2:1 S.E. (.268" MIN.)
M.A.W.P.	125 PSIG. @ 210 °F	INSIDE:	GLASS LINED
ASME SECTION	IV 2013	OUTSIDE:	S. BLAST PRIME
X-RAY:	RT-NO / H.L.W.	CAD "B" SIZE UNDER "STD"-SERIES	
GALLONS:	3500 WT. 4938 LBS.	BY: E.S. SCALE: 1/2"=12"	
SERIAL NO.		ROY E. HANSON JR. MFG.	
N.B.		1600 E. WASHINGTON BLVD. LOS ANGELES, CA 90021	
		REV. 3-24-14	
		DATE: 10-8-09	
		FOR: HANSON TANK	
		HORIZ. HOT WATER TANK.	
		SURFACE AREA = 359.2 SQ. FT.	



VIEW W/O SUPPORTS (2) PLC'S