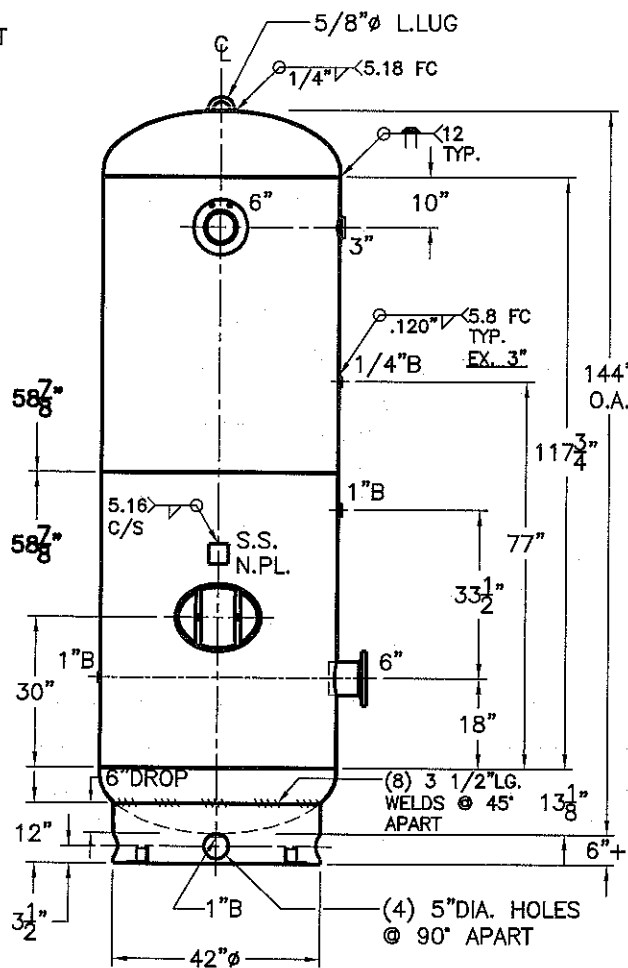


6" - 150# R.F.S.O.
 FLG. W/ SCH. 80
 SA-106-B
 PIPE x 7 5/8" LG.
 (2) PLC'S.



SHELL / HEADS		NOTE:	
JOGGLE	.250 SA-455 2:1 S.E.	1) DRAIN FOR HORIZONTAL MOUNT	ADDED AFTER SERIAL #423,136
		2) IMPACT TESTING NOT REQUIRED.	UG-20(F)
		3) HYDRO @ 195 PSIG. MIN.	
		3) DRAIN FOR HORIZONTAL MOUNT ADDED AFTER SERIAL #423,136	
M.A.W.P.	150 PSIG. @ 400 'F	FOR: HANSON STANDARD	48-VP-1060-R
M.D.M.T.	-20 'F @ 150 PSIG.	VERT. AIR TANK	REV 7-7-14
ASME SECTION VIII	DIV. 1, 2013	SURFACE AREA = 160.4 SQ. FT.	DATE 3-6-12
X-RAY:	RT-4 SPOT L.S. ONLY	INSIDE: UNPAINTED	
GALLONS:	1060	OUTSIDE: SHOP PRIME	
SERIAL NO.		CAD "B" SIZE UNDER "STD"-SERIES	
		BY: E.S.	
		SCALE: 1/2"=12"	
		ROY E. HANSON JR. MFG.	
		1600 E. WASHINGTON BLVD.	
		LOS ANGELES, CA 90021	

