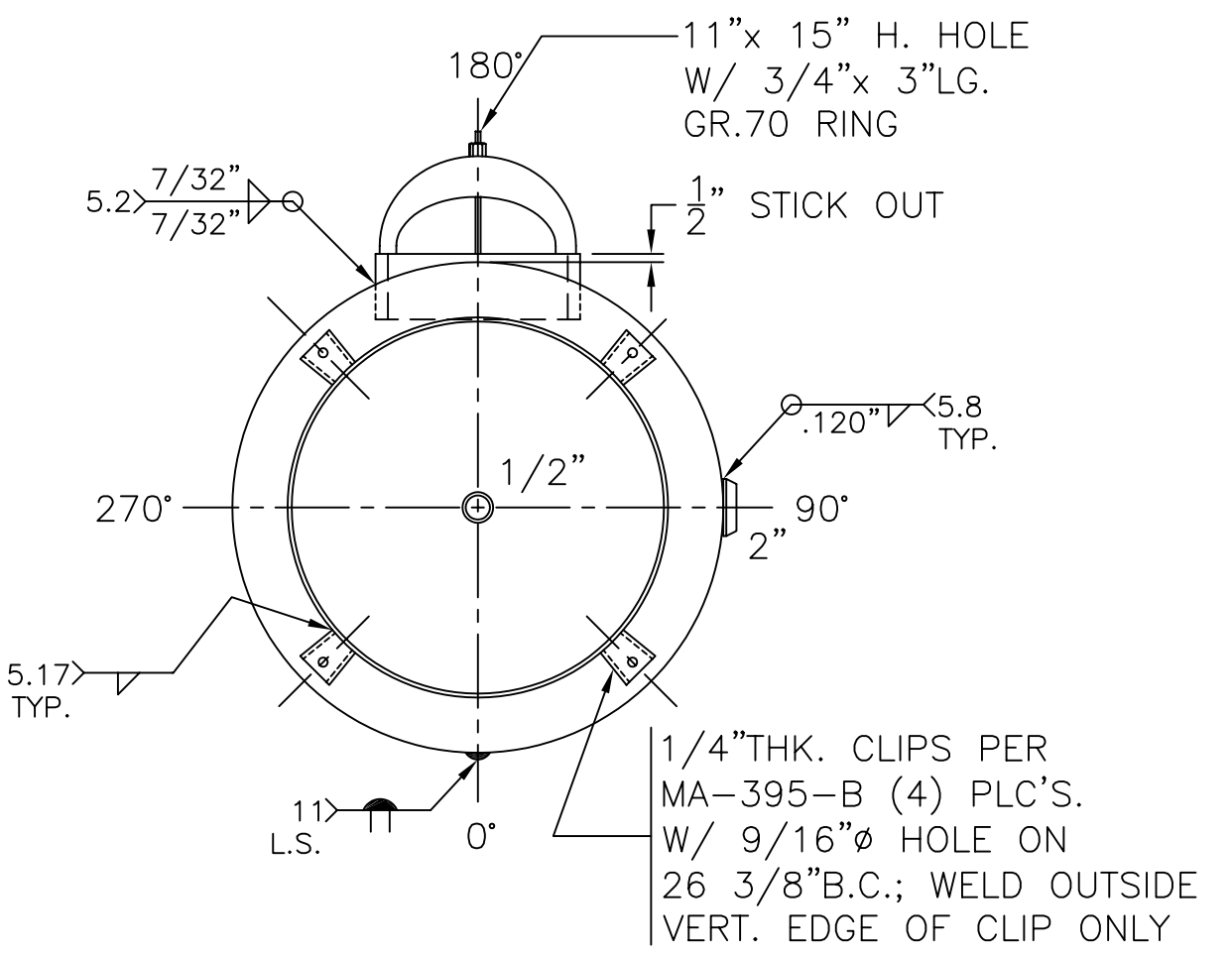
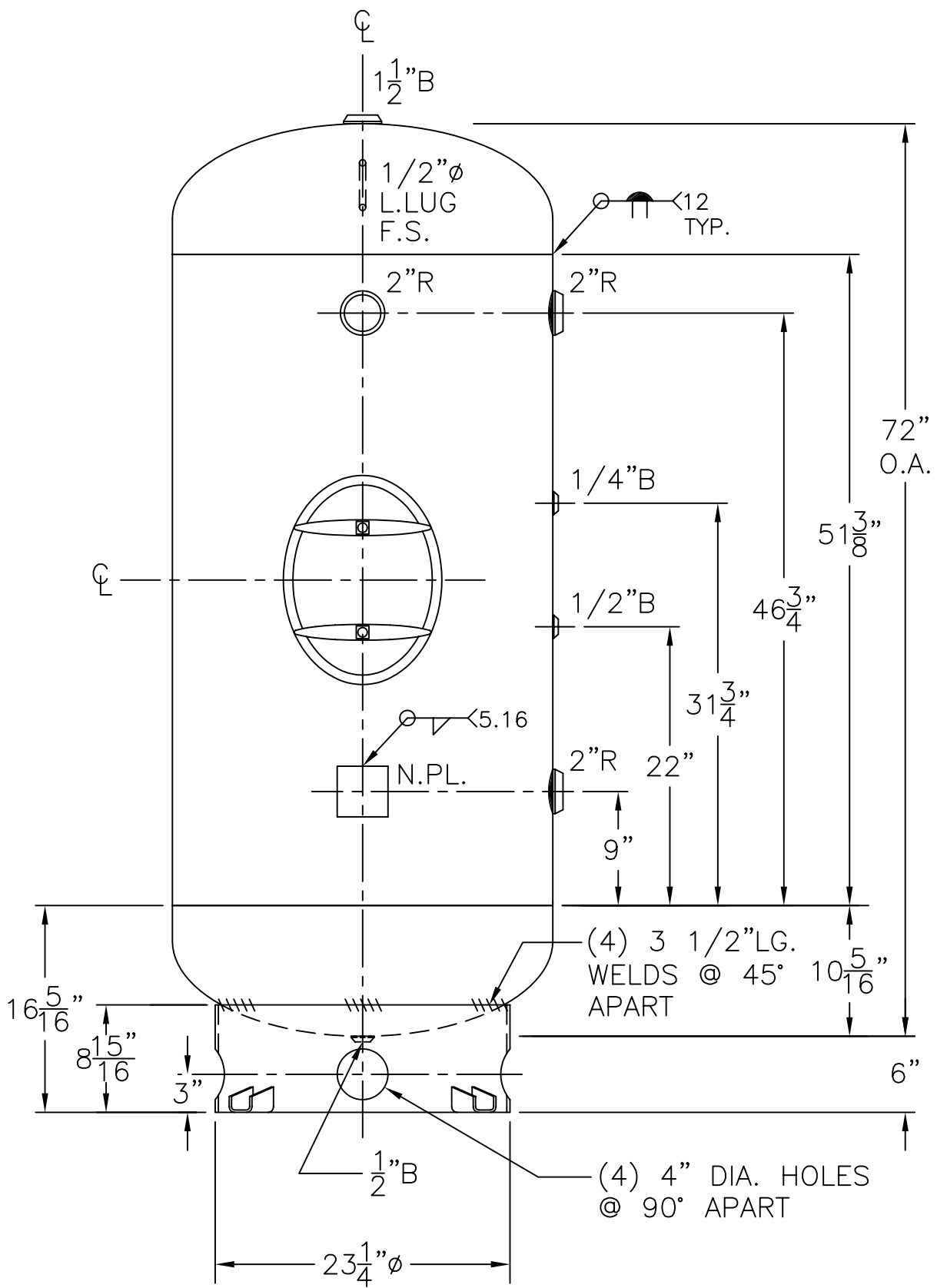


- NOTES:
- 1) HYDRO @ 260 PSIG. MIN.
 - 2) CRN SASKATCHEWAN
 - 3) IMPACT TESTED? NO UG-20(f)
 - 4) WELD SIZE NPT UW-16(f)(5)
 - 5) MANWAY RING EDGES MUST BE ROUNDED PER: UG-76(c)



SHELL / HEADS		.166" SA-414-G 2:1 S.E. (.164"MIN.) JOGGLED-GREEN STRIPE	
M.A.W.P.	200 PSIG. @ 200 °F		
M.D.M.T.	-20 °F @ 200 PSIG.		
ASME. SECTION VIII	DIV. 1, 2013		
X-RAY:	RT-NO		
GALLONS:	200	WT. 488	LBS.
SERIAL NO.			
N.B.			
INSIDE: EPOXY LINED		SURFACE AREA = 50.2 SQ. FT.	
OUTSIDE: PRIME		VERT. AIR TANK	
CAD-"B" SIZE UNDER "0"-SERIES		BY: E.S.	
SCALE: 1"=12"		SCALE: 1"=12"	
FOR: HANSON STANDARD		REV. 12-26-13	
0-30-VA-200-R		DATE: 5-23-94	
FOR: HANSON STANDARD			
VERT. AIR TANK			
SURFACE AREA = 50.2 SQ. FT.			
INSIDE: EPOXY LINED			
OUTSIDE: PRIME			
CAD-"B" SIZE UNDER "0"-SERIES			
BY: E.S.			
SCALE: 1"=12"			
ROY E. HANSON JR. MFG.			
1600 E. WASHINGTON BLVD.			
LOS ANGELES, CA 90021			